

TRANSMISSION TIMES





Another year is now behind us, and as we look ahead to what's to come in 2023, we are reminded how fortunate we are to have the opportunity to do the work that we do every day, alongside so many incredible clients, partners and team members. **To everyone we had the honor of collaborating with in 2022, thank you for helping to make it a year for the books.**

As we have all supported each other in striving to bounce back from the pandemic and adjusting to the new normal, we have been impressed time and again by the resiliency and innovation of the people within our company and across this industry. **It is truly an honor to work with you.**

As we welcome 2023, we hope you are celebrating the successes of a wonderful year, and we wish you and your loved ones health, happiness and prosperity. **Looking forward to continuing to join forces with you to make the coming year every bit as productive and memorable as the last one!**

2022 BY THE NUMBERS

1,926 **TOTAL
PROJECTS**

56 **UNIQUE
CUSTOMERS**

304,437 **MILES
DRIVEN**



TOP DRIVERS BY DISTANCE:
JOE KELDERHOUSE
DEVON PORTER
MARTY SMITHERMAN

BUSIEST MONTHS:
OCTOBER
NOVEMBER
MAY

PSSI International Teleport **Is Hiring**

Interested in joining our team? PIT is hiring an operator to work in the Technical Operations Center (TOC).

FULL JOB DESCRIPTION

PIT is the largest privately-owned teleport in the U.S. Located 20 miles northeast of Pittsburgh, Pennsylvania, PIT provides global video, audio, voice and data transmission services 24 hours a day, 7 days a week, 365 days a year. The teleport's Technical Operations Center (TOC) manages transmission, distribution and playout services weekly for a wide range of events including NASCAR, UFC, Top Rank, NHL, and WWE, including OTT streaming services for these clients and many others.

RESPONSIBILITIES

- ▶ Perform engineering support duties for all live broadcasts
- ▶ Provision physical equipment, including case assembly, racking, cabling, electrical, etc.
- ▶ Learn and operate ad insertion, encoding, and other broadcast tasks and equipment
- ▶ Work flexible hours, including nights and weekends
- ▶ Other duties as assigned by department management

BASIC REQUIREMENTS

- ▶ Experience or interest in broadcast technologies
- ▶ Familiarity with production control room and studio equipment
- ▶ Working knowledge of Google and Microsoft Office applications
- ▶ Available to work nights and weekends and/or have a flexible schedule
- ▶ Ability to lift and move Audio/Visual equipment weighing up to 50 pounds for various needs
- ▶ Bachelor's degree in computer science, broadcast or related field preferred, but not required

Competitive salary, benefits and 401K. Salary dependent on experience.
PSSI Global Services, LLC is an Equal Opportunity Employer.

To apply, please send resume to: **cbergeson@strategictv.com**



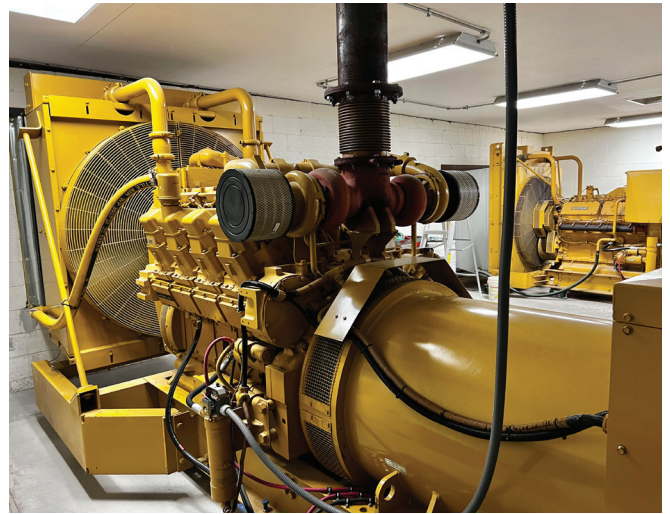
Powering Up at PIT

PSSI International Teleport (PIT) is upgrading our power infrastructure with new, state-of-the-art technology that will double our current capacity and the amount of backup power available to our clients. PIT worked with an electrical engineering group to design and upgrade the power infrastructure, which includes new ground transformers, generators, transfer switches and more.

The input power to the facility — a 480-volt, 1,200-amp service — travels through a Liebert high-energy surge current diversion system. The backup power is provided by two newly installed Caterpillar 750 kW generators. The generators have associated fuel tanks that house approximately 2,000 gallons of fuel. Both of these power sources feed into two newly installed ASCO 7000 Series 480-volt transfer switches.

The 480-volt main breaker feeds into a new Toshiba G9000 Series 500 kVA UPS system. The system is designed with two strings of batteries for redundancy in case of a battery failure. All panels and switch gear connecting the equipment were also newly installed with Square D I-Line series panels.

This upgrade, which will be complete in the first quarter of 2023, provides us with the resources to offer the best possible service for current and future projects as we continue to grow.



Employee of the Quarter: Marty Smitherman

“Marty Smitherman rejoined the company for the Citrus Bowl on New Year's Day 2022, and he hardly had time to take a breath after that. Marty worked just about every week of the year for multiple customers — NASCAR, Showtime, Fox Sports, WWE, Golf Channel, NBC, Turner and more — all over the country, from his home state of Florida to Texas, Missouri, Nebraska, Ohio and beyond. He put in a lot of miles and a lot of hours, and we're lucky to have him back on the team.”

— **Clint Bergeson**, General Manager

Spotlight on **Mark Huss**



Q Please tell us about your journey to your current role at PSSI.

A I started at PSSI in 1994. Prior to that, I attended college at Cal Poly Pomona and then worked for Pasadena City College and the City of Pasadena. For my first six months or so at PSSI, I assisted with field audio for live shots, and then they moved me into uplinking. Over the years, I have been involved with production, uplinking, minor repairs on our electronics and managing supplies. I also played an integral role in implementing and managing our DIRECTV services. I've gotten to work on projects ranging from airing media tours for new roller coasters to serving as the official playout location for Comedy Central's "South Park."

Q Please tell us a little bit about your daily work at PSSI.

A I currently work out of our Burbank area office, where I help maintain our Sprinter vans as well as the larger trucks that come in. I still handle uplinks for various events, and I also assist international commentators with ringside audio for boxing and UFC events. I get to wear a lot of different hats.

Q What are your favorite things about working in this industry?

A I really like anything to do with education or bringing knowledge to people. I also enjoy any project that has to do with the amusement park industry. I was an avid roller coaster enthusiast in my younger years, so having the opportunity to work on projects for Six Flags Magic Mountain and Universal Studios has been fun.

Q What are your favorite PSSI memories?

A I remember there was one project I really liked where we went on dinosaur digs with students who were reporting back live to various schools and answering questions from other students. I also enjoyed taking part in a two-way video and audio live link across the U.S. to scientists on a research vessel in Antarctica, allowing students to interact live with them. The distance the signals had to travel blew my mind.

Q If not this career, what?

A I think I would have worked in education — maybe as an instructor in audio and visual communications at a university or community college.

Q Please tell us a bit about your family.

A I grew up in Pomona, California, with my parents, as one of seven children (four boys and three girls). There were nine of us in a three-bedroom, one-bathroom home, so I definitely learned good time management skills, especially when it came to getting ready for school with so many people to navigate. I was the middle child, but the oldest boy. We were a tight-knit family, and most of us were within two years of age of the next closest sibling, so it was fun.

Q What's something people might be surprised to learn about you?

A When I was younger, I was really into skiing and hiking. I also have a 19-year-old tortoise that I adopted from Jim Flowers.